



# ***Natomas Unified COVID-19 Safety Plan***

***Revised April 1, 2022, reflecting changes to the Quick Reference Guide,  
Introduction and Sections 2, 4 and 6 (Section 6 is new)***

***DUE TO THE FREQUENT CHANGES IN GUIDANCE, THIS PLAN WILL BE UPDATED  
DURING THE FIRST WEEK OF EACH MONTH***

***Any significant changes that occur between the publication date and the updated Safety  
Plan can be found on our District Website ([COVID Information](#))***

*This plan was initially reviewed by Sacramento County Public Health (SCPH) on 2/18/2021, Natomas Unified received approval to move forward with reopening plans. Subsequent updates from CDPH have been included in revisions since the original posting.*

*This Sacramento County Public Health approved plan was originally shared publicly on our district Website and at the February 10, 2021 Regular Board Meeting. The plan is in alignment with the direction given by Trustees as outlined in Board approved Resolution #21-06 to Delegate Authority to Reopen Schools during the COVID-19 Pandemic which was approved on February 10, 2021*

***April 1, 2022***

TABLE OF CONTENTS:	page
<b>Quick Reference Guide</b>	3
<b>Introduction</b>	5
Section 1. COVID Safety Plan Posting Requirements	6
Section 2. Mitigation Strategies	6
• Facial Coverings	7
• Physical Distancing	8
• Maintain Healthy Operations	8
• MERV13 and HEPA Filters	9
• Cleaning and Disinfecting	9
• Identify, Evaluate and Correct Hazards	11
• Engineering and Administrative Controls	12
• Student Enrollment and Out of Country Travel	13
Section 3. Personal Protective Equipment	14
• Personal Protective Equipment (PPE) Supplies	14
• PPE Signage	15
Section 4. Volunteers, Visitors and Facility Use of School Sites	15
• Volunteers and Visitors	16
• Drop off/pick up practices	17
• Facility Use	17
Section 5. Healthy Hygiene Habits	18
Section 6. Extra Curricular, Co-curricular and Field Trips	19
• Athletics, band	
• Extra curricular activities	
• Field Trips	
Section 7. Signs, Symptoms, Exposure	20
• Signs and Symptoms	21
• Signs and Symptoms of Vaccinated Individuals	21
• Screening Protocol	21
• Types of screenings	22
• Symptomatic at School	22
• Confirmed Case and Next Steps	25
• Non Outbreak, Outbreak or Major Outbreak	27
• School Closure Determination	29
• Testing	29
• Vaccinations	31

Section 8.	Communication Plan	31
	• How to Report COVID-19 Related Illness	32
	• Notification and Letters	32
Section 9.	Exposures and Reporting	33
	• Investigation of COVID-19 Cases	33
	• Supporting Letters	34
	• Record Keeping and Reporting	35
	• Confidentiality	37
	• Community Reporting Requirements	38
Section 10.	Training	38
	• Training Staff and Students	38
	• Staff Training	39
	• Community Training	40
Appendix A:	Previous Guidance	41
Appendix B:	Consultation with Bargaining Groups and Community (CPP, GC)	42
Appendix C:	Historical NUSD Safety Addendums and Certifications	45
Appendix D:	Definitions	47

# Quick Reference Guide

## Isolation and Quarantine:

As of January 26, 2022 (subject to frequent changes per CDPH guidelines)

### Natomas Unified's Isolation/Quarantine Protocols for Students and Employees

<div> <div>COVID-19 Symptoms:</div> <div> <ul style="list-style-type: none"> <li>Fever or chills</li> <li>New cough</li> <li>Difficulty breathing</li> <li>Fatigue</li> <li>Runny or stuffy nose</li> <li>Diarrhea</li> <li>Vomiting</li> <li>Body aches</li> <li>Headache</li> <li>Soar throat</li> <li>New loss of taste or smell</li> </ul> </div> </div>			
#1	I have been exposed to COVID-19	<b>Come to school or work:</b> <ul style="list-style-type: none"> <li>You may continue to come to school or work unless you have symptoms (see #2)</li> <li>You need to be tested within 3-5 days of exposure</li> <li>You may continue to participate in extracurricular activities</li> </ul>	<b>If positive:</b> <ul style="list-style-type: none"> <li>Follow #3</li> </ul>
#2	I have symptoms of COVID-19 <small>See symptom list above</small>	<b>Come to school or work:</b> <ul style="list-style-type: none"> <li>Take a COVID (home, rapid, PCR) test and test negative <b>OR</b></li> <li>Get an alternative diagnosis from your doctor <b>OR</b></li> <li>At least 10 calendar days have passed since your symptoms first started <b>AND</b></li> <li>You have not had a fever for at least 24 hours <b>AND</b></li> </ul>	<b>If positive:</b> <ul style="list-style-type: none"> <li>Follow the "I'm COVID-19 positive with symptoms" section</li> <li><b>Isolate</b> at home</li> </ul>
#3	I'm COVID-19 positive with symptoms	<b>Come to school or work:</b> <ul style="list-style-type: none"> <li>At least 5 days* have passed since your symptoms started <b>AND</b></li> <li>You have a negative COVID rapid antigen test collected on or after day 5 <b>AND</b></li> <li>You have not had a fever for at least 24 hours <b>AND</b></li> <li>Your symptoms are improving</li> </ul> <small>*Your first day of symptoms is day 0</small>	<b>If positive after day 5:</b> <ul style="list-style-type: none"> <li>Stay home 10 calendar days after your symptoms started</li> <li>Return to school or work if you have not had a fever for the last 24 hours <b>AND</b></li> <li>Your symptoms are improving</li> <li>You will be exempt from testing for 90 days after your initial positive result</li> </ul> <b>Note: Negative test NOT required on day 11 to return to school or work</b>
#4	I'm COVID-19 positive with NO symptoms	<b>Come to school or work:</b> <ul style="list-style-type: none"> <li>At least 5 days* have passed since the day your initial positive test was taken <b>AND</b></li> <li>You have a negative COVID rapid antigen test collected on or after day 5</li> </ul> <small>*Day 0 is the day your positive test was taken</small>	<b>If positive after day 5:</b> <ul style="list-style-type: none"> <li>Stay home 10 calendar days after your initial positive result</li> <li>You will be exempt from testing for 90 days after your initial positive result</li> </ul>
#5	I have been exposed to COVID-19 at home	<b>Come to school or work:</b> <ul style="list-style-type: none"> <li>If you are vaccinated with no symptoms, come to school. Test 3-5 days after exposure</li> <li>If you are unvaccinated, stay home. Test after 5th day of exposure</li> </ul>	<b>If positive:</b> <ul style="list-style-type: none"> <li>Stay home until 11th day (follow #3)</li> </ul>
			<b>If negative:</b> <ul style="list-style-type: none"> <li>Come to school or work after day 5</li> </ul>

**Isolation at Home:**  
 Wear a well-fitting mask over your nose and mouth when you are around others, indoors and outdoors, for a total of 10 days. This includes around household members.
 

- Adults should wear a well-fitting medical grade mask (surgical or respirator)
- Children should wear a well-fitting, non-cloth mask with a nose wire

For more information, visit [natomasunified.org/covid-19-general-information](https://natomasunified.org/covid-19-general-information)

Testing is available to all NUSD students and staff from 7:00 - 9:00 a.m. Monday-Friday at 1931 Arena Blvd.

NUSD offers free community testing every Tuesday from 10:00 a.m. - 3:30 p.m. in partnership with the County Department of Health at 1931 Arena Blvd.



## Masks

Masks are no longer required; however, they continue to be highly recommended by the California Department of Public Health. Please be advised that this may change should there be a COVID mutation or surge in our community.

## QUICK UPDATE:

Updated 4/1/2022

1. It is required that the COVID Safety Plan (CSP) be updated at a minimum of every 6 months. NUSD updates the CSP the first week of each month. It is located on the [District Website](#) and in the [Digital Backpacks](#).
2. Masks are no longer required for anyone on our school sites or District property. This includes students, staff, parents, visitors and volunteers. Masks are available for anyone who chooses to wear one.
3. You do not need to test negative on the 11th day to return to school or work. The quarantine period ends after day 10, regardless of test results.
4. You may test positive for up to 90 days- this does not mean that you stay home. Please return to school or work on the 11th day.
5. TK- staff: Home exposure- if you are vaccinated and do not have symptoms, come to school/work and test between days 3 and 5; if you are not vaccinated, stay home, test after day 5 (on day 6) and if negative and symptom free, come to school.
6. Preschool student home exposure: stay home until the last positive person has cleared their isolation period.
7. Extracurricular activities, including sports: You no longer need to quarantine for exposure and weekly testing will be conducted if a player or coach is symptomatic or tests positive.
8. Extracurricular, and co-curricular activities: Masks are strongly recommended for any activity with increased exertion, face to face contact or voice projection. Weekly pooled testing will only be conducted if someone is symptomatic or it is requested.
9. If you test positive and are symptom free, even if you still test positive on day 6, you must stay home.
10. If you test positive on day 6, but negative on day 7, come to school or work- you do not need to wait until day 10.
11. Unvaccinated staff who are required to test weekly may not use a home test- per Cal/Osha, staff cannot both test and read the results independent of a healthcare provider or supervisor witness.

# Introduction

This has been a long two years as we have worked together to navigate the COVID-19 pandemic. As with each rendition of this Safety Plan, we provide our community with the latest mitigation updates from our state and local authorities. Natomas Unified is committed to the health and safety of the staff, students and community. Our goal is to keep our students and staff safe and in school for in-person instruction, while helping to reduce the transmission of COVID-19.

The most recent guidance from CDPH, dated March 12, 2022, urges school districts to interpret guidance based on the local community as well as the mitigation strategies implemented by the school district. Natomas is quick to respond to any COVID exposure, has a robust testing and vaccine program, and offers free health care. Each classroom, office and school has HEPA filters as well as a MERV 13 ventilation system. Personal protective equipment (PPE) is available in each classroom. We carefully monitor the community indicators and take swift action when needed. We continue to hold transparency to a high standard and update the Dashboard twice weekly. This CSP applies the guidance as appropriate to the degree of service we provide for our community.

The Natomas Unified School District's **COVID-19 Safety Plan** includes the most relevant guidance provided by the California Department of Public Health, Sacramento County Public Health, and Cal/OSHA.

The guidance referenced in this document includes:

1. [State of California Safe Schools Hub](#)
2. [Staying Home When Sick- CDC](#), March 22, 2022
3. [CDPH Guidance March 12, 2022](#)
4. [CDPH Guidance for Use of Face Masks](#)- February 28, 2022
5. [Cal/Osha Executive Order](#)- February 28, 2022
6. [CDPH Guidance for Use of Face Masks](#)- February 7, 2022
7. [Interim COVID Guidance for Pre-Schools & Child Care](#), January 28, 2022
8. [Cal/Osha Guidance and Resources](#), January 14, 2022
9. [CDPH K-12 Guidance](#) January 12, 2022
10. [Group Tracing Approach, CDPH](#), January 12, 2022
11. [CDPH Guidance For Face Coverings](#), January 5, 2022
12. [CDPH Update](#), January 6, 2022

Updated 4/1/2022

13. [Weekly Testing Mandate for Unvaccinated Staff](#), August 11, 2021

**The Natomas Unified COVID-19 Safety Plan** includes all the requirements as set forth by the California Department of Public Health (CDPH). This document will be available on the District website and will be updated as guidance changes.

Natomas Unified School District has overall authority and responsibility for implementing the provisions of this COVID-19 Plan in our workplace. In addition, all managers and supervisors are responsible for implementing and maintaining The **COVID-19 Safety Plan** in their assigned work areas and for ensuring employees, students and families receive answers to questions about the program in a language they understand.

All employees, students and families are responsible for using safe school and work practices, following all directives, policies and procedures, and assisting in maintaining a safe school environment. This provides guidance for necessary in-person student supervision and instruction and targeted support services and for those service providers, including school site staff and others, to understand the required health and safety practices needed to prevent the spread of COVID-19 in their work and school settings. This COVID-19 Safety Plan will address all mitigation protocols as well as testing and reporting requirements.

## Section 1. COVID Safety Plan Posting Requirements

### Content of COVID-19 Safety Plan

The Natomas Unified School District **COVID-19 Safety Plan** includes the CDPH July 12, 2021 (and all subsequent Supplemental Guidance provided to districts) requirements for in-person school, mitigation strategies, PPE, healthy hygiene, isolation and quarantine, and a robust testing and vaccination process.

### COVID-19 Posting Requirements

[The COVID-19 Safety Plan](#) is posted on the District website.

## Section 2: Mitigation Strategies

### Facial Coverings

On February 28, 2022, California announced that after 11:59 pm on March 11, 2022, the Health Order mandating all students and staff wear masks in the K-12 settings, including childcare and on the bus, will no longer be in effect. Instead, masks will be strongly recommended in the classroom setting. In addition, on February 28, 2022, the Governor signed Executive Order N-5-22 which suspends Cal/Osha's Emergency Temporary Standards and aligns with the new guidelines set by CDPH. In short, although strongly recommended, no staff member, regardless of vaccine status, will be required to wear a mask. After this effective date, Natomas Unified will allow students, staff and families to make the personal decision as to whether or not to wear a mask while at school.

Natomas Unified recognizes that there will be staff, students and parents who will make the personal decision to continue to wear a mask. To support their decision:

1. We ask that everyone be kind and respectful of the individual decisions that staff, students, and our families make regarding face coverings.
2. Natomas Unified will continue to make masks available for students and staff who make the decision to wear a face covering. Face coverings will be available in the school office.
3. Per CDPH, once the new guidance has gone into effect, no person can be prevented from wearing a mask as a condition of participation in any school activity.
4. The student and/or parent are the only individual(s) who may decide whether a student wears or does not wear a face covering.
5. The District and schools will continue to respect when students and adults decide to leave their masks on.



#### ***Music, Athletics and Related Activities:***

Masks are not required but are strongly recommended during music, athletics and related activities that have increased exertion, prolonged face to face contact, or voice projection.

**Effective Masks:** During COVID-19, we learned that face masks combined with other preventive measures, such as getting vaccinated, high quality ventilation systems, and frequent hand-washing, can help slow the spread of the virus that causes COVID-19. If an individual chooses to wear a face covering, the Center for Disease Control advises that individuals wear the



most protective mask possible. Examples of effective masks include:

- A mask with a good fit and good filtration;
- A well fitted mask has no gaps between the face and mask;
- A close fitting cloth mask can be worn on top of a surgical/disposable mask;
- Cloth masks only work well if they are tight fitting and made of materials that filter out small particles. Good quality cloth masks have two layers of tightly woven cotton with a third layer of non-woven fabric.

In the event of a COVID-19 surge, variant or mutation, it may be necessary for Natomas Unified to again require facial coverings as a mitigation effort.

## Physical Distancing

In-person instruction can occur safely without physical distancing, indoors or outdoors, when other mitigation strategies are implemented. Per the Supplemental Guidance, dated August 29, 2021, schools should make every effort to maximize distancing in all settings as long as such efforts do not interfere with full time attendance for all students.

## Maintain Healthy Operations

In order to maintain healthy operations, the following actions are in place:

1. All individuals on campus are required to conduct a passive screen (check themselves for symptoms, including a fever) prior to entering campus.
2. Symptomatic individuals on campus are required to go home until they obtain a negative test result, an alternative diagnosis or have been isolated for 10 days. The site nurses and healthcare team members oversee exposures and testing and are the direct contact, for their assigned sites, to SCPH;
3. NUSD has a communication dashboard that notifies the public of any positive cases on District property. FERPA (Family Educational Rights and Privacy Act) and HIPPA (Health Insurance Portability and Accountability Act) medical privacy guidelines are strictly adhered to at all times;
4. Testing and vaccinations are offered to the Natomas community free of charge;
5. Rapid and PCR testing is available at each school site. Pooled testing is being utilized with athletes
6. *Urgent Care Now Natomas*, a free medical clinic for under and uninsured students and staff, is open Monday and Fridays at 1931 Arena Blvd. The clinic will provide testing and health screenings (strep, ear



Updated 4/1/2022

infections, flu, upper respiratory infections, etc) to determine whether the student/staff is safe to be on campus;

7. The NUSD *Mobile Health Clinic* will be available in the winter/spring 2021 to travel to schools, apartment complexes, community centers and other locations with underrepresented students, to offer vaccines, testing and health screening;
8. NUSD has installed water bottle filling stations at all campuses. In addition, the drinking fountains are now operable.
9. NUSD has purchased hand sanitizer and wipes for all classrooms and office spaces as well as dispensers throughout campuses and work stations;
10. Additional soap dispensers have also been installed in bathrooms throughout our schools.

## MERV and HEPA Filters

To maximize the flow of fresh air, and to reduce the level of particulates/contaminates in the air, NUSD has installed HEPA filters and MERV13 air filters (the type normally used in hospital settings) district-wide. PBK architects reviewed and certified NUSD's upgrade to Merv 13 air filters, and the installation of HEPA air purifiers.

- NUSD has invested in MERV upgraded filters for our Heating/Ventilation/Air Conditioning (HVAC) systems districtwide. The upgraded filters remove a higher level of particulates/contaminants from the air;
- High Efficiency Particulate Air (HEPA) air purifiers have been installed in classrooms and offices districtwide. These purifiers will scrub the air in classrooms and offices spaces throughout the day;
- The NTA MOU, signed October 31, 2020, ensures that the District will operate the HVAC systems to allow for the most fresh air changes per hour. NUSD committed, in the MOU, the purchase of MERV 13 air filters for the HVAC system as well as HEPA air filter machines for classrooms and other spaces across the district. NUSD will continue this practice in the 2021-2022 school year.

**Poor Air Quality/Smoke:** Schools need to balance the COVID prevention benefits of ventilation and outdoor activity with the outdoor air quality. On days when the air quality is poor, schools will move outdoor activities indoors. Windows and doors should be kept closed and HVAC systems should be adjusted to prevent outdoor air from being pulled into the building. Everyone is required to wear a mask. A limited supply of KN95 masks are available if needed.

## Cleaning and Disinfecting

The District rooms, facilities, all offices and school spaces are cleaned once per day with Ionophore sanitizer, which is FDA approved, non-toxic sanitizer used by other districts,

Updated 4/1/2022

colleges and universities throughout the state and nation. Each District custodian has their own backpack sprayer and backup machines are available as needed.

The following processes are used for cleaning and disinfecting the District:

1. Restrooms: disinfecting and cleaning will take place (DAILY)
  - a. Door Knobs or handles
  - b. Light switches and cover plates
  - c. Paper towel dispenser knobs or handles
  - d. Faucet handles
  - e. Toilet and urinal flush levers
  - f. Toilet and urinal partitions, doors (including knobs, levers or slides)
  - g. Restock all soap and paper towel dispenser
  - h. Restock all hand sanitizers or replace
2. Cafeteria: cleaning and disinfecting w/kitchen area cleaned & larger cafeteria space cleaned with tables and benches cleaned between use (DAILY)
  - a. Refrigerator door handles
  - b. Microwave door handles and buttons/keypads
  - c. Table tops, Door Knobs or handles
  - d. Light switches and cover plates
  - e. Vending machine buttons
  - f. Drinking fountain covered-not in use
  - g. Student lunch tables and benches seats
  - h. Restock all soap and paper towel dispenser
  - i. Restock all hand sanitizers or replace
3. Locker room: cleaning and disinfecting will take place (DAILY)
  - a. Door Knobs or handles
  - b. Light switches and cover plates
  - c. Lockers
  - d. Partition walls in restrooms
  - e. Drinking fountains covered-not in use
  - f. Sinks are included in the restroom cleaning schedule
  - g. Showers are not in use
4. Classroom: cleaning and disinfection of room (DAILY)
  - a. Door Knobs or handles
  - b. Light switches and cover plates
  - c. Desk tops
  - d. Table tops
  - e. Countertops and sinks
  - f. Soap dispensers
  - g. Paper Towel dispensers
  - h. White board trays
  - i. Secondary desk tops are cleaned after each use

Updated 4/1/2022

5. Procedure for cleaning an Isolation Room or Classroom of symptomatic individual
  1. Cleaning suits, goggles and/or face shield, gloves and N95 masks available for cleaning the isolation room and a classroom of symptomatic individual(s)
  2. If possible, ventilate (*open a window*) the room to outside air after student leaves
  3. If possible, close and secure the room for a minimum of 24 hours or as long as possible prior to deep cleaning and disinfection
6. Other locations: cleaning and disinfecting (DAILY)
  - a. Elevator call and operating buttons
  - b. Stairway handrails, doorknobs, light switches
  - c. Hallway door knobs, handles, drinking fountain faucets
  - d. Vehicles' steering wheels, door handles, shift knobs, dashboard controls
7. Play structures: students may access play structures without limitations.

## Identify, Evaluate and Correct Hazards

NUSD will implement the COVID-19 Safety Plan and will correct any unsafe hazard in a timely manner based on the severity of the hazard. Areas to consider, and if necessary, adjust include:

- Follow all procedures in the event of an exposure of a positive case at any NUSD campus;
- Follow all screening procedures including passive screen, active screen and visual screen;
- Maintain current knowledge of state and local guidance and hazard prevention.
- Site specific evaluation of potential high COVID-19 transmission areas have been identified with PBK Architects and staff have been notified of requirements for cleaning and disinfecting and other safety procedures within these high intensity areas. High intensity areas can include spaces such as staff rooms, workrooms and restrooms;
- Regularly review the process in place to immediately address COVID-19 cases, as well as workplace compliance with health standards;
- Analyze and adjust, if needed, the procedures for disinfection in the case of an outbreak or major outbreak;
- Ensure all staff and students have access to the appropriate PPE;
- Ensure staff and students are trained, and receive on-going training as needed, to stay current on COVID-19, policies, procedures and county and state guidance;
- Provide, free of charge, COVID-19 testing, both PCR and Rapid Testing, in the event of exposure, positive case, or an outbreak or major outbreak;
- Provide, free of charge, COVID-19 vaccination to all eligible students, staff and parents;
- At this time, NUSD will maintain signage, posters, some directional markers, etc. necessary for visual reminders of expectations for all members of the school community while on a Natomas campuses;
- Maintain a high degree of transparency and communication protocols with the community, including staff and student exposure, an outbreak, or a major outbreak.

- Make every effort to update the Dashboard every Tuesday and Friday evening.
- Make every effort to communicate an exposure the same day the site is notified.
- Use Minimum Efficiency Reporting Value (MERV) 13 filters as part of the ventilation system at every school site and District building.
- Use portable High Efficiency Particulate Air (HEPA) filtration units in all office areas and classrooms to reduce the risk of transmission.
- Each site and District building has a respirator that is approved for the purposes of COVID-19 health and safety. Respirators are available when such equipment is necessary to protect the health of the employee.
- When there is a workplace or school site COVID-19 emergency, the District will work with the COVID-19 Response Team and Sacramento County Public Health to determine whether to stop some or all operations at the site until the COVID-19 emergency (hazard) has been corrected.
- The Health Department will be notified of any corrections.

## Engineering and Administrative Controls

### Engineering Controls:

- Natomas Unified will continue to offer plexiglass barriers in school offices at this time;
- As much as possible, Natomas maximizes the use of outside air (unless there is poor air quality of AQI of 100 or higher for air pollution). In addition, NUSD has placed HEPA Filters in each classroom and office space and has replaced all HVAC filters with MERV13, hospital grade, air filters.

### Administrative Controls:

- NUSD has cleaning procedures which are outlined in training documents and videos. The procedures have been reviewed and approved by PBK, an outside consultant. The procedures include procedures for cleaning and disinfecting commonly touched surfaces;
- Employees have been trained, and receive continued training, in cleaning and disinfecting protocols. Protocols are included in the [Standard Operating Procedures](#) manual;
- Sharing of tools and equipment is minimized to the maximum extent possible. All maintenance staff have their own disinfecting equipment, including a backpack style sprayer;
- All areas are cleaned, per the protocol provided. PPE is provided to staff, including gloves, face coverings, face shields, goggles and disposable gowns;
- Natomas encourages the frequent use of hand sanitizer and hand washing. Hand sanitizer stations are located in common areas and individual bottles are located in all classrooms and offices.

### Personal Protective Equipment:

Updated 4/1/2022

- Natomas frequently evaluates the need for PPE, including, but not limited to, face coverings, gloves, and eye protection. Natomas offers a variety of PPE to accommodate different needs, including a variety of face coverings, respirators, and gowns;
- Respirators and eye protection (goggles, respirators and face shields) are available at each site;
- Sharing PPE is strictly prohibited.

## Student Enrollment and Out of Country Travel

Refer to the [Centers for Disease Control and Prevention website](#) prior to traveling during a pandemic.

Staff or students who travel out of the State or the Country must self-screen prior to returning to school/work. The Centers for Disease Control (CDC) identifies high-risk travel areas on their [website](#). The individual can immediately return to school/work if the following is met:

1. The staff member did not travel to a [high-risk area](#) as identified by CDC
2. The individual has a negative test obtained no more than three days prior to returning home
3. The individual has not been exposed to someone who is symptomatic or has tested positive
4. The individual is asymptomatic

The student/staff must self-quarantine for a minimum of 5 days from date of exposure, and test negative after the 5th day, if any or all of the following conditions are met:

1. Traveled to or from a [high-risk area](#) as identified by CDC;
2. The individual has been exposed to someone who is symptomatic or someone who has tested positive;
3. The individual is exhibiting one or more symptoms associated with COVID-19

If the individual tests positive after the 5th day, they must quarantine through the 10th day and may come to school on the 11th day, assuming the individual has reduced symptoms and no fever for 24 hours.

### Protocol for New Enrollment

New student enrollment restrictions: Students who are new to Natomas and are moving to the District from a CDC identified high-risk State or Country must follow the out of Country travel restrictions identified above. New students who are from a high-risk area, will need to test negative prior to starting school. If they are unable or unwilling to test, the individual must quarantine for 10 days, with day one starting on the day after they left the identified State or Country.

## Section 3. Personal Protective Equipment (PPE)

### Personal Protective Equipment (PPE) Supplies

#### Classroom supplies

PPE kits have been prepared for each staff member and the kits are available in the classroom or the school office. Additional PPE is available upon request. This includes disposable masks, hand sanitizer, wipes, etc.

- Each site has hand sanitizer in all classrooms, offices and on the bus;
- Soap is available at all sinks;
- Hand washing stations are available at each site;
- Facial tissue is available in all classrooms, office areas and on the bus;
- Extra face coverings are available in the classrooms, office areas and on the bus;
- Extra garbage cans have been distributed to each site;
- Disposable water bottles and/or cups are available.

#### Isolation Room Supplies (in addition to above)

- Thermometer
- Pulse oximeter
- N95 masks
- Gloves and gowns (cleaning suits)
- Respirator
- Goggles and/or face shield



#### Thermometers

- Non-touch thermometers (digital) are available at all District properties;
- The entrance to each school and District building has a non-touch temperature scanning sensor machine.

#### Gloves

- Gloves are not recommended for teachers or students for general use;
- Gloves are required for anyone cleaning, providing first aid or in food service (eg: health assistants, nurses, office staff, any additional staff caring for a symptomatic individual, food handlers, and custodial staff);

#### Goggles

As COVID-19 is known to spread by respiratory droplets through the air or by coming in contact



Updated 4/1/2022

with a contaminated surface and then touching the mucosal membranes in your nose and mouth, the CDC recommends wearing goggles in a situation of moderate to substantial community exposure. In order to keep staff and students safe, goggles are included as part of the PPE in the isolation room, should staff choose to wear them. It is recommended that staff wear either goggles or a face shield when the situation warrants additional coverage. Prescription eyewear, reading glasses and sunglasses do not provide the same type of protection as they are open around the side of the frames. Natomas provides goggles and face shields as part of the PPE equipment at each site.

### **Respirators and protective clothing**

A respirator is a personal protective device that is worn on the face or head and covers at least the nose and mouth. A respirator is used to reduce the wearer's risk of inhaling hazardous airborne particles (including infectious agents), gasses or vapors. Respirators, including those intended for use in healthcare settings, are certified by the CDC. It is not recommended that staff wear surgical masks and respirators that are meant for healthcare workers. Currently, surgical masks and respirators are critical supplies that should be reserved for healthcare workers and other medical first responders to prevent supply shortages. NUSD has a supply of respirators and N95 masks for emergency use. Each site has a supply as part of their isolation room PPE.

### **Gowns**

Gowns are examples of personal protective equipment used to protect the wearer from the spread of infection or illness if the wearer comes in contact with a potentially infectious individual. Gowns are provided in the isolation room.

## **Personal Protective Equipment (PPE) Signage**

Signage reminding staff, students and visitors how to appropriately wear PPE, such as face coverings, the requirements to don PPE, and how to put them on, take them off and clean/sanitize them, are posted in classrooms, hallways and offices throughout the District.

## **Section 4. Volunteers, Visitors, and Facility Use of School Sites**

Natomas Unified is reopening its Facilities Use to the community. An announcement with further details will be coming soon. In addition, visitors and volunteers are allowed on campus following the Volunteer/Visitor plan below. All campus visitors are required to comply with all safety measures as outlined in the NUSD COVID Safety Plan.



## Volunteers and Visitors

As outlined in the Volunteer Application Packet:

1. A visitor is defined as an individual who, with District authorization attends a student performance, special event, etc. A visitor does not need to have fingerprint clearance or a tuberculosis test. Visitors must follow all safety precautions in the NUSD COVID-19 Safety Plan.

- *Examples of a visitor include: a parent attending Open House, Back-to-School Night, Sporting Event, an IEP meeting, etc.*

2. A volunteer is defined as a non-paid individual who, with school District authorization, assists students, schools, or educational programs regularly. The service can be on a short-term, project-specific or on-going basis. A volunteer is required to complete a Volunteer Application, Code of Conduct, take a tuberculosis (TB) test, provide proof of the COVID vaccine (complete series, either two doses of Pfizer or Moderna or a single dose of Johnson and Johnson), or provide weekly negative COVID testing results within 48-72 hours prior to the volunteer assignment(s) and have a fingerprint/background check completed prior to rendering service.

- *Examples of a volunteer include: a parent helping out in his/her child's classroom, a parent transporting students to a field trip, a parent/individual volunteering on field trips, a college student assisting with a class for credit, etc.*

To minimize the COVID risk:

- For exposure notification: Volunteers must sign-in noting the time and sign-out noting the time and locations visited. The school office staff will confirm the volunteer's attendance and COVID-19 information by initialing next to the volunteer's sign-in signature prior to allowing entry to the site.

### Testing and Vaccine

Per the [August 11, 2021, Weekly Testing Health Order](#), all workers (paid or unpaid) are required to be vaccinated or to submit to weekly testing. Once proof of the COVID vaccine is provided, volunteers will not be required to submit proof in subsequent visits. Volunteers who are not vaccinated are required to provide proof of a negative test result completed 48-72 hours prior to the volunteer assignment. Acceptable testing includes:

- PCR tests completed by any recognized clinic, doctor, pharmacy, etc
- A Rapid Test completed by any recognized clinic, doctor, pharmacy, etc

Test results must be electronic or on signed stationery from a doctor's office. No home tests will be accepted.

Updated 4/1/2022

The school sites will be provided with information regarding vaccine and testing status. Non vaccinated volunteers must submit proof of testing when they show up for their scheduled assignment(s). Failure to provide proof of testing with a negative result will result in cancellation of the scheduled assignment(s).

## Drop off/pick up practices

### ***Parent/Guardian Drop Off and Pick Up Locations***

Each school site has a designated drop off/pick up location for parents who transport their children to school. Each site will also have sufficient road signage and staff to ensure a safe drop off for everyone. Please follow all directions, including the signage and any staff directing traffic. Do not linger as this may cause a safety hazard.

***Kindergarten parents*** must drop off and pick up their student at the designated drop off/pick up location designated for kindergarten students. Staff will be there to greet the student. Parent/guardians are allowed to walk their student to class.

***Preschool parents***, at drop off, will walk their student to the designated area outside of the classroom and sign their student into school. Staff will guide the student into class. At pick-up, students will be released from the classroom by staff to parents one at a time. Parents will sign out their students at the designated area.

## Facilities Use

Natomas Unified is reopening its Facilities Use to the community. Due to staffing shortages, we may not be able to accommodate all requests, and we may need to cancel times that have already been scheduled if we are not able to safely staff the event. The following language has been added to our agreements:

*“NUSD is experiencing staffing shortages. Permits will be approved on a case-by-case basis, dependent on the availability of staff. Events that have been approved may experience cancellation based on the availability of staff. NUSD will notify users as early as possible if an event must be canceled due to a shortage of staff. Refunds will be issued if payment was received.”*

All groups must sign an addendum that states they will comply with the current CDPH guidelines and will indemnify/hold the District harmless from any infection resulting from the use of District facilities.

NUSD facilities use is dependent upon the COVID rate in the community. At any time, based on direction from CDPH and SCPH, facilities use may need to be restricted.

Updated 4/1/2022

## Section 5. Healthy Hygiene Habits

Each site has health staff assigned to support the health needs of the students and staff. Students may go to the office for basic health care needs, such as medication and other health related concerns. There is a separate isolation area in the event that an individual is symptomatic on the campus. This isolation area is separate from the general health area in the school.

NUSD has developed protocols for healthy hygiene habits. The protocols have been shared with staff and students through training videos, Zoom training and reminder posters are placed throughout the District buildings and classrooms.

The District teaches and reinforces hand washing, no-contact with eyes and mouth, and how to cover your mouth when you cough or sneeze. Staff and students are required to watch training videos on proper technique. The videos are available on [My NUSD Portal](#). Time is made available for staff and students to watch the relevant videos. Staff are required to take a quiz at the completion of each lesson. Videos regarding healthy hygiene include:

- [Hand washing](#)
- [Use of Face Mask](#)
- [COVID-19 Workplace Safety](#)
- [COVID-19 Cleaning & Disinfecting](#)
- [COVID-19 Symptoms](#)
- [What if I had COVID-19 & How long is COVID-19 Contagious?](#)
- [Tips for Managing COVID-19 at Home](#)
- [Help to Slow the Spread of COVID-19](#)
- [Understanding COVID-19: How to Stay Safe](#)
- [CDC Handwashing What You Need to Know](#)
- [CDC Hand Washing Page](#)
- [Hand washing poster](#)

Healthy hygiene protocols include the requirement for sites to enforce the following:

Frequent hand washing throughout the day

- Wash hands for 20 seconds with soap
- Before and after eating
- After coughing/sneezing
- After being outside
- Before and after using the restroom

Frequent hand washing breaks scheduled throughout the day (elementary)

- Hand Washing Schedule -

Updated 4/1/2022

- Before entering classroom in morning
- When leaving classroom for recess, lunch, or specials
- When returning to the classroom from recess, lunch or specials
- When leaving school at the end of the day
- Anytime the student sneezes or coughs
- Provide regular and frequent access to handwashing facilities
- Each site will offer non-toxic, FDA/EPA approved fragrance-free hand sanitizer
- Ethyl alcohol based are used by unsupervised students
- Children under 9 should use sanitizer under adult supervision only
- Each site will be provided with tissue to wipe noses. Students and staff will cough/sneeze into their elbow.

When sports equipment or education supplies are shared during an activity, participants should follow the hand washing guidelines and use hand sanitizer before and after the event. If the hand washing and sanitation guidelines are followed, balls or other objects can be touched by multiple players and used during practices.

Although the drinking fountains are operable, NUSD has installed water bottle filling stations at all campuses.

## Section 6. Extra-curricular, Co-curricular and Field Trips

The following is based upon current guidelines. If the community rate of COVID changes, CDPH may require that we adjust our plans for extra-curricular and co-curricular activities. Natomas Unified will plan for the following activities; however, if a change is required, we will notify you immediately. In the event of a required change, Natomas will have alternative plans so students may enjoy these very important year-end activities.

Although testing is not required for some of these events, we continue to offer testing daily from 7 am- 9am at 1931 Arena Blvd. Each site will continue to offer testing and Urgent Care Now Natomas is open from 7 am - 7 pm Monday at Friday.

**Athletics:** based on the new guidance, the following applies:

- Masks are not required but they are strongly recommended, especially for sports with high exertion rates and face to face contact.
- Weekly testing will no longer be required to participate. If an individual is symptomatic, testing will be required by all team members to continue playing.
- At any time, based on the community levels and requirements from CDPH, masks and testing may be reinstated.

Updated 4/1/2022

**Music and Band:** Based on current guidelines, masks are no longer required. Please follow mitigation strategies, such as hand washing, and physical distancing, as appropriate based on the activity and the level of vocal projection and saliva spray (eg: wind instruments, choir)

**Dances, prom:** To the extent possible, dances will be held indoors. Masks are strongly recommended. Effective April 1, 2022, testing will not be required; however, individuals with symptoms will not be admitted. Proms will be scheduled by the school site per pre-pandemic standards; however, we are not able to control if the venue cancels. In this case, an alternative plan will be utilized. At the time of the prom, if required by CDPH, masks and testing may be required.

**Senior Night:** Senior night will be planned per pre-pandemic standards. Masks are not required; however, testing will be required prior to loading the bus. Each student will have hand sanitizer, masks and home kits available on the trip. Anyone with symptoms must test and if positive, the student will be isolated until the parent picks them up. All staff and families will be notified of an exposure. When the students return they will be provided with a home test as they get off the bus.

**Field Trips:** Field trips may now be planned per pre-pandemic standards, following the already established scheduling process. Masks are strongly recommended but not required. Testing is not required to get on the bus. The bus will be thoroughly cleaned at the end of each trip following protocol.

**Open House:** No limitations are on Open Houses and Back to School Night. Masks are strongly recommended but not required.

**Assemblies:** Effective April 1, 2022, large event guidelines will no longer be in effect. Assemblies may be held indoors and outdoors and although strongly recommended, masks are not required.

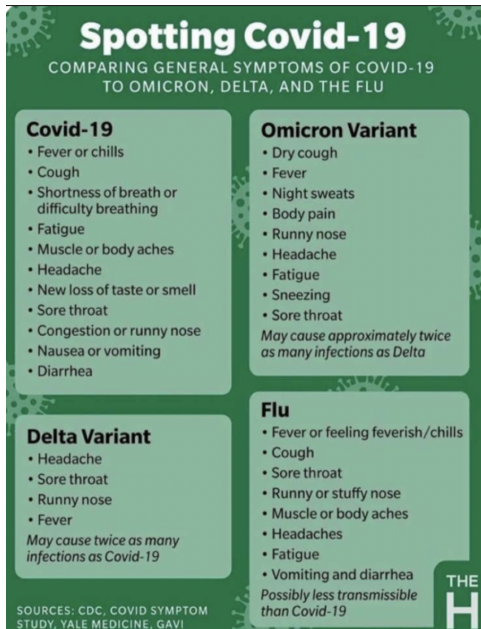
## Section 7. Signs, Symptoms, Exposure

### Signs and Symptoms

Signs and symptoms for COVID-19 depend on the variant and whether the infected person has been vaccinated.

COVID-19 symptoms include cough, fever or chills, shortness of breath or difficulty breathing, muscle or body aches, sore throat, new loss of taste or smell, diarrhea, headache, fatigue,

Updated 4/1/2022



nausea or vomiting and congestion or runny nose. COVID-19 can be spread from person to person.

The Omicron Variant is highly contagious and resembles flu-like symptoms. The symptoms may be mild, especially if the person is vaccinated. Symptoms include: a dry cough, fever, runny nose and body aches. Because the symptoms can be mild, and can look like allergies or the common cold, staff and students **MUST** stay home and not report to work or school if they are experiencing any of the symptoms. Testing is available everyday and COVID can quickly be ruled out without missing any school or work. If you test in the morning and your results are negative, please attend school and work as long as you meet the regular expectations of not coming to work or school if you are sick (a fever, etc).

Report to your supervisor, principal or teacher if you are staying home for COVID-19 related reasons. Exposure notification may be necessary based on specific circumstances.

## Signs and Symptoms for Vaccinated Individuals

While vaccinated individuals still seem to be protected from serious illness and hospitalization, the vaccine has never been a 100% promise. Individuals who are vaccinated can still test positive for COVID. Breakthrough Infection symptoms include mild symptoms which may include:

1. Sore throat
2. Congestion/runny nose
3. Nausea/vomiting/diarrhea
4. Headache
5. Fatigue/muscle or body aches

## Screening Protocol

NUSD still requires that all individuals engage in passive screening prior to entering campus or a District facility. If an individual is symptomatic at school, active screening may be conducted. If the individual has any of the conditions listed above, they will not be permitted on campus.

Updated 4/1/2022

# Types of screenings

## Passive screening

- Students and staff will self-screen at home prior to getting on a school bus or coming to school. If the following apply, do not come to school:
  - Temperature (at or above 100.1 degrees), cough, shortness of breath, chills, repeated shaking with chills, headache, sore throat, new loss of taste or smell, fatigue, muscle or body aches, nausea or vomiting, diarrhea
- Report symptoms to your supervisor or principal.

## Active Screening

- At any time during the day, staff may conduct a visual screening and determine whether an Active Screen shall occur.
- An active screen includes taking the individual's temperature and evaluating for other symptoms.
- If staff/student has a temperature of 100.1 or higher or is exhibiting COVID-19 symptoms, **Protocol for Symptomatic Individual at School** will be implemented

**When Should I Stay Home From School?**

**Symptoms commonly found with COVID-19 or other viral infections**

- Sore throat
- Congestion / runny nose
- Nausea / vomiting / diarrhea
- Headache
- Fatigue / muscle or body aches

**Symptoms frequently associated with COVID-19**

- Fever (≥ 99.5°F)
- Cough
- Difficulty breathing
- Loss of taste / smell

**Vaccinated - symptoms are the same, but may be less severe**

- ✓ If you have one or more of the above symptoms, and you have not been exposed to someone who has COVID-19, stay home and return to school after a negative test and 24 hours after symptom resolution (without fever-reducing medication).
- ✓ If you test negative, stay home. Return to school 24 hours after symptom resolution.

**Exposure to COVID-19 Positive Person?**

Stay home and contact your child's school.  
Further direction will be provided by the District Nurse during contract tracing.

## Visual Screening

- Staff/student/visitor does not look healthy (eg: pallor, chills, sweating, excessive coughing/nose blowing, etc.) or is complaining of not feeling well, staff/student/visitor will report to the Health Room for an Active Screen

- If staff/student has a temperature of 100.1 or higher or is exhibiting COVID-19 symptoms, **Protocol for Symptomatic Individual at School** will be implemented

## Symptomatic at School

Any individual who is symptomatic at school will be placed in the designated Health room until they can be picked up.

Each school site has an identified isolation room. The Isolation room has a PPE kit that ensures staff safety while supporting someone who is symptomatic. Staff will monitor students throughout the day, including conducting visual and active screenings. If a staff person feels that a student is not feeling well, an active screen will be

conducted. If a staff person is not feeling well, or is not passing a visual screen, the principal may require the staff person to undergo an active screen. This is to ensure the safety of the staff and students on the campus.

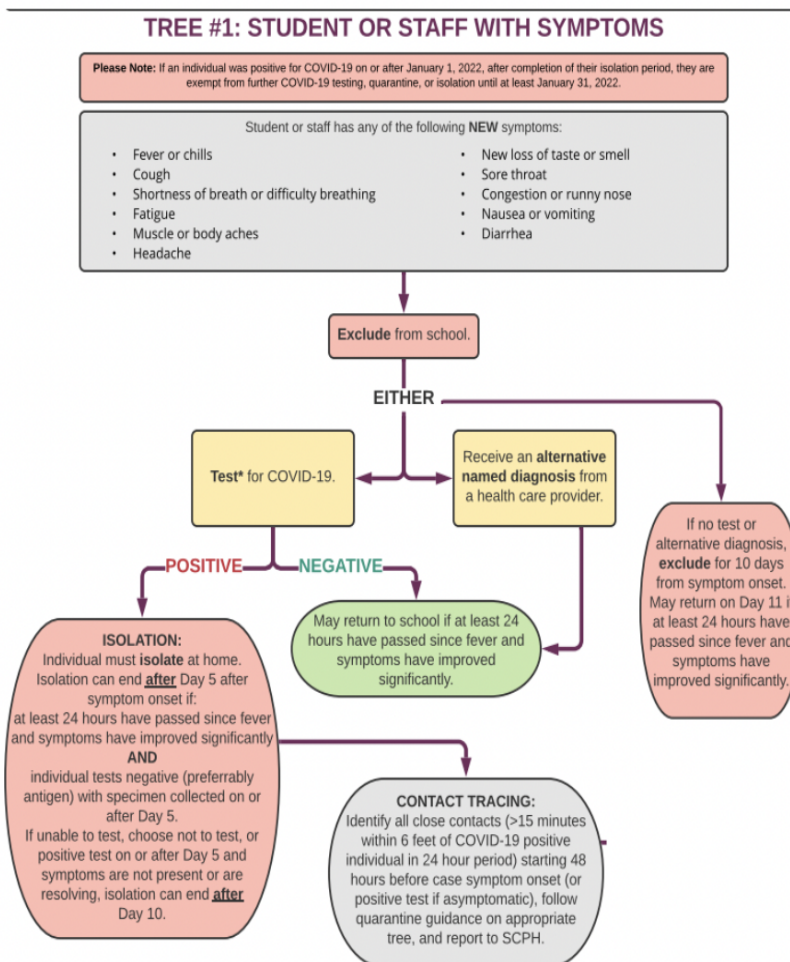
Updated 4/1/2022



Any student who is exhibiting one or more symptoms will need to be isolated. Staff will review the student health record to rule out known allergies and other health ailments that may contribute to the symptoms; however, due to the highly contagious nature of this virus, a negative test or alternative diagnosis is still required. If a rapid test is negative, and symptoms persist, a PCR test will be recommended to confirm the results. If the student does not have a health profile, and is not signed up for testing, the student will need to wait in the isolation room until the parents/guardian arrives. If a student is struggling to breathe, 911 must be called.

If the staff member is unable to drive, the staff must wait in the isolation room until they can be picked up. If the staff person is struggling to breathe, 911 must be called.

In the event that a student or staff member is placed in the isolation room and 911 is required, the nurse must be called and the Superintendent's Office and Student Services must be notified. The nurse and/or Student Services will provide further direction regarding next steps for the staff/student.



The SCPH table to the left outlines the requirements for symptomatic individuals at school. The staff or student must have a negative test or alternative diagnosis, and fever free before coming to school. *Urgent Care Now Natomas* is open Monday and Friday from 7 am to 7 pm for diagnostic support. Natomas continues to offer daily testing, 7 am - 9 am at 1931 Arena Blvd as well as in the school Health Office. With the abundance of testing and health support available, staff and students should not



miss work if the test results are negative.

If a staff member is at work and is not feeling well, testing will be offered. If testing is not an option, the staff person will go home and protocol will be followed. If a student is at school, and is exhibiting any of the above mentioned symptoms, the parent/guardian will be called and the following options will be provided.

- If the student is exhibiting symptoms on campus, the parent/guardian will receive a phone call and will be required to pick up their student;
- If the student is signed up for on site testing (parent/guardians sign their student up through [My Primary enrollment](#)), then testing can be done on site without the parent/guardian being present or needing to pick their student up. If the test is negative, and the student is fever free, normal health protocol will be followed and if able, the student may stay at school.
- If the student does not have an account, the parent does not want to open an account, or the parent does not want their student tested, the student will need to be picked up until there is either a negative diagnosis, an alternative diagnosis, or the 10 day quarantine period has been completed. The student will wait in the Health Office until the parent/guardian arrives.
- Independent study will be available for students who quarantine.

As of January 26, 2022 (subject to frequent changes per CDPH guidelines)

### Natomas Unified's Isolation/Quarantine Protocols for Students and Employees

COVID-19 Symptoms:			
<ul style="list-style-type: none"> <li>Fever or chills</li> <li>New cough</li> <li>Difficulty breathing</li> <li>Fatigue</li> <li>Runny or stuffy nose</li> <li>Diarrhea</li> <li>Vomiting</li> <li>Body aches</li> <li>Headache</li> <li>Soar throat</li> <li>New loss of taste or smell</li> </ul>			
#1 I have been exposed to COVID-19	<b>Come to school or work:</b> <ul style="list-style-type: none"> <li>You may continue to come to school or work unless you have symptoms (see #2)</li> <li>You need to be tested within 3-5 days of exposure</li> <li>You may continue to participate in extracurricular activities</li> </ul>	<b>If positive:</b> <ul style="list-style-type: none"> <li>Follow #3</li> </ul>	<b>If negative:</b> <ul style="list-style-type: none"> <li>Keep coming to school or work</li> </ul>
#2 I have symptoms of COVID-19 <small>See symptom list above</small>	<b>Come to school or work:</b> <ul style="list-style-type: none"> <li>Take a COVID (home, rapid, PCR) test and test negative <b>OR</b></li> <li>Get an alternative diagnosis from your doctor <b>OR</b></li> <li>At least 10 calendar days have passed since your symptoms first started <b>AND</b></li> <li>You have not had a fever for at least 24 hours <b>AND</b></li> </ul>	<b>If positive:</b> <ul style="list-style-type: none"> <li>Follow the "1m COVID-19 positive with symptoms" section</li> <li><b>Isolate</b> at home</li> </ul>	<b>If negative:</b> <ul style="list-style-type: none"> <li>Stay home until fever free for 24 hours and symptoms have improved</li> <li>This applies to everyone regardless of vaccination status</li> </ul>
#3 I'm COVID-19 positive with symptoms	<b>Come to school or work:</b> <ul style="list-style-type: none"> <li>At least 5 days* have passed since your symptoms started <b>AND</b></li> <li>You have a negative COVID rapid antigen test collected on or after day 5 <b>AND</b></li> <li>You have not had a fever for at least 24 hours <b>AND</b></li> <li>Your symptoms are improving</li> </ul> <small>*Your first day of symptoms is day 0</small>	<b>If positive after day 5:</b> <ul style="list-style-type: none"> <li>Stay home 10 calendar days after your symptoms started</li> <li>Return to school or work if you have not had a fever for the last 24 hours <b>AND</b></li> <li>Your symptoms are improving</li> </ul>	<b>Isolation at Home:</b> Wear a well-fitting mask over your nose and mouth when you are around others, indoors and outdoors, for a total of 10 days. This includes around household members. <ul style="list-style-type: none"> <li>Adults should wear a well-fitting medical grade mask (surgical or respirator)</li> <li>Children should wear a well-fitting, non-cloth mask with a nose wire</li> </ul>
#4			
#5 I have been exposed to COVID-19 at home	<b>Come to school or work:</b> <ul style="list-style-type: none"> <li>If you are vaccinated with no symptoms, come to school. Test 3-5 days after exposure</li> <li>If you are unvaccinated, stay home. Test after 5th day of exposure</li> </ul>	<b>If positive:</b> <ul style="list-style-type: none"> <li>Stay home until 11th day (follow #3)</li> </ul>	<b>If negative:</b> <ul style="list-style-type: none"> <li>Come to school or work after day 5</li> </ul>

**Natomas**  
Unified School District  
Connecting students to their future

[Protocol for a Symptomatic Individual to Return to School](#)

Updated 4/1/2022

It is not necessary to exclude exposed asymptomatic students and staff until the individual's test results are known. Free rapid testing will be offered to any symptomatic individual on a school campus.

## Confirmed Case and Next Steps

All students who are able, are offered short term independent study while they isolate. Students with disabilities will continue to be offered their special education services through a virtual format. Students who are not able to engage in short term independent study due to COVID-19 symptoms, will receive an excused absence.

The student/staff who have symptoms must not attend in person activities while determining if there is an alternate cause of the symptoms or if the symptoms may be COVID-19 related. If a person is symptomatic, one of the options below must apply:

- The staff/student has a negative COVID-19 test result;
- The Healthcare provider has confirmed an alternate diagnosis for symptoms;
- The individual does not have an alternative diagnosis, and has not tested, requiring a mandatory 10 day quarantine, returning to school on the 11th day.
- Effective January 25, 2022, up to two weeks of supplemental paid sick leave is available for staff who are ill with COVID, are quarantining (exposed) or experiencing vaccine side effects. This includes individuals who are seeking a medical diagnosis, or caring for a child or another family member who is isolating due to COVID. This law is aimed at staff who are unable to work or telework because they have COVID or are experiencing symptoms. If staff have any questions, please contact Human Resources.

### **Isolation Period for Positive Individual**

Student/staff who test positive: Regardless of whether the student/staff is vaccinated or unvaccinated, a person who is positive must stay home for a minimum of five (5) days. Isolation can end after five (5) days if the person is symptom free, fever free (minimum of 24 hours without medication) and has taken an antigen (rapid test) test after the fifth day with a negative result. Testing may be completed by a medical doctor, legally recognized clinic, the NUSD home test or clinics, or through any recognized testing facility. If any of the above conditions do not apply, the student/staff must continue to isolate and may return on the 11th day.

Individuals who are asymptomatic, but who have had a positive COVID result within the last 90 days (this includes previously diagnosed individuals who have already completed an isolation period), do not need to isolate; however, if the individual has symptoms they must isolate for the remainder of the 10 days of the isolation period.

### **TK-Adult Students/Staff Who Have Been Exposed to COVID 19 (quarantine)**

Updated 4/1/2022

1. Per the CDPH Group Tracing Approach Guidance, dated January 12, 2022, exposed individuals do not need to quarantine if they are symptom free and are willing to test within 3-5 days of exposure.
2. If symptoms develop, the exposed individual must stay home for a minimum of 5 days. If they test negative after the 5th day, the person may return to school; however, if they continue to test positive they must be isolated for the duration of the 10 day period. If the individual chooses to continue to test, and tests negative after the 6th day, but before day 10, they may return to school or work.
3. If an unvaccinated exposed individual is unable or unwilling to test at the 3-5 day mark, they must quarantine for the 10 days. The day the individual was exposed is day 0.
4. Exposed students who participate in testing may continue to take part in all aspects of K-12 schooling, including sports and extracurricular activities, unless they develop symptoms or test positive for COVID-19.
5. If your student was exposed in the home, and they are not vaccinated, they must quarantine for five days. If they test negative after day 5, and are symptom free, they may return to school. If they are already vaccinated and are symptom free, they may immediately return to school (no quarantine); however, they will need to test within 3-5 days.

If a student is able to complete school work, short term independent study will be offered while the student self-isolates or is quarantined. If a student is unable to do the work due to illness, the absence will not affect their grade or attendance.

If staff are interested in working from home, they must talk to their supervisor, and if appropriate, develop a plan.

#### **Preschool Isolation/Quarantine:**

Staff must wear face coverings at all times. To the greatest extent possible, the students must wear face coverings.

**Symptomatic:** individuals with symptoms must stay home and test or get an alternative diagnosis. If the test is negative, the individual may return if at least 24 hours have passed without symptoms, and no fever. If the individual is positive, the individual may return if he/she tests negative after day 5 and symptoms are vastly improving or have resolved.

**Exposure within the school:** If a student is exposed to a positive individual, he/she may continue to attend school as long as he/she is symptom free and tests after 5 days.

**Exposure outside of school:** A student who has been exposed outside of the school day must stay home for 5 days. The student may return on day 6 with a negative test and no symptoms or symptoms which have vastly improved. The student must be fever free for 24 hours without medication. If unable or unwilling to test, the student must stay home for 10 days

Updated 4/1/2022

from exposure (date of exposure is day 0). If the student is fully vaccinated, they may continue to attend school as long as they do not develop symptoms and agree to test after day 5.

**In-home exposure:** An in home exposure is a continuous exposure. The quarantine period ends at the completion of the isolation period for the last positive case in the home. The student may return with a negative test and if he/she is symptom free or has vastly improved symptoms.

**Preschool Staff:** Staff in the preschool program follow the same protocol as all District staff. They may continue to come to work if they are symptom free and agree to testing between days 3-5.

## Non-Outbreak, Outbreak or Major Outbreak

### **Positive Case in a Non-Outbreak Setting**

In a situation that does not meet the qualifications of multiple infections or major outbreak, the following steps will be followed:

1. Exposure letters will be sent to families and staff. All HIPPA guidelines for confidentiality will be followed.
2. A member of the healthcare team will determine standard for significant exposure
  - a. Two days before the first developed symptom until 10 days after the symptoms first appeared, and 24 hours passed with no fever and symptoms have improved
  - b. The high-risk exposure period for asymptomatic positive cases includes the two days before until 10 days after the specimen for the first positive test was collected.
3. Within one business day, notify all staff and students who have been exposed without revealing personal information;
4. Offer free testing;
5. The staff member will receive guidance from Human Resources regarding relevant COVID-19 related benefits, the District's leave policies and any leave guaranteed by contract;
6. Exclude from the site all individuals who have tested positive;
7. Follow return to work criteria and timelines;
8. Investigate the exposure and address all hazards. Disinfect all exposed areas as per established guidelines;
9. Follow all record keeping requirements. Update the Dashboard.

### ***Multiple Infections and Outbreaks***

Per CCR, Title 8, Section 3205.1, if there are three or more COVID-19 cases in a workplace or school site within a 14-day period then the following will apply:

1. Staff and families will receive written notice that the site meets the criteria for Multiple Infections. The written notice will include next steps, including free testing.
2. COVID-19 testing shall be provided to all employees and students at the site, with the exception of employees or students who have not been on site. The testing will be provided at no cost to the employee/student.
3. All employees/students will be tested once and then one week later. NUSD will offer Rapid Testing. Staff/students may opt to use their own medical provider; however, free testing will be offered.
4. Testing will be offered once per week until the site no longer meets this qualification.
5. Additional testing may be necessary as determined by the Health Department.
6. All employees who have COVID-19 or have been exposed to COVID-19 will stay home as per NUSD guidelines.
7. During interviews, staff will determine possible workplace related factors that may have contributed to COVID-19 and address those factors immediately.
8. All COVID-19 policies will be reviewed to ensure relevancy and update the policies as needed or appropriate.
9. This process will repeat every 30-days if the outbreak continues.
10. SCPH will be contacted and involved in the actions taken at the District, including decisions made regarding prevention.
11. The nurse for each site is the SCPH contact person;
12. Notification requirements to SCPH: employers are required to contact SCPH immediately, but no more than 48 hours after learning of three or more COVID-19 cases to obtain guidance on preventing the further spread within the workplace

### ***Major Outbreaks***

A major outbreak is defined as 20 or more COVID-19 cases within a 30-day period. This guidance applies until there are no new cases detected in a 14-day period. Per CCR, Title 8, Section 3205.2, the following applies:

COVID-19 testing. Natomas will provide weekly COVID-19 testing, or more frequently if recommended by the local health department, to all staff and students who were present on the District site for the relevant 30-day period(s) or for those who continue to come to school or work at the site. COVID-19 testing will be provided at no cost.

Required to stay home. All COVID-19 cases and staff, students, contract agencies and visitors (this list is not exhaustive and includes anyone/everyone with a reason to be on an NUSD campus) with COVID-19 are excluded from the workplace (subsections 3205(c)(10) and (c)(11)).

Investigation of workplace COVID-19 illnesses. Exposure tracing will be conducted and all staff will comply (subsection 3205(c)(3)). Notification requirements to SCPH: employers are required

to contact SCPH immediately, but no more than 48 hours after learning of three or more COVID-19 cases to obtain guidance on preventing the further spread within the workplace

## School Closure Determination

A school closure, determined in consultation with SCPH, is when the decision is made that no students or staff are allowed on campus due to an outbreak or the determination that an active in-school transmission has occurred. Situations that may indicate the need for a school closure include:

1. Within a 14-day period an outbreak has occurred in 25% or more of the stable groups on campus;
2. Within a 14-day period, at least three outbreaks have occurred and more than 5% of the school population is infected.

The length of closure is 14-days unless a decision, in consultation with SCPH, advises otherwise. The school may reopen after 14-days if the following conditions have been met:

1. The site is thoroughly cleaned and disinfected
2. Public health has completed an investigation, with approval to reopen
3. SCPH has been in consultation with the District and is in agreement with the reopening.

## Testing

Testing allows for early identification of cases and exclusion from school in order to help mitigate the spread of COVID-19. As test results only represent a snapshot in time, NUSD provides PCR and rapid testing options free of charge as part of our total mitigation strategy.

Natomas is committed to the health of our community. In an effort to keep our staff and students healthy, the following guideline has been established: staff who are not vaccinated, or who have not shown proof of a COVID vaccination, must submit to weekly testing. Testing will be offered during office hours at the school site and at the Community Clinic (1931 Arena Blvd) every Tuesday. Allowable tests include PCR tests and rapid tests administered by a recognized county or state run clinic, pharmacy or private medical office. Home tests are not accepted. Completion of staff testing is a metric that will be reported weekly, so if a staff member chooses to get tested outside of the school testing program, proof will be required each week.

COVID testing is available on all campuses and through our community testing site (Tuesday at 1931 Arena Blvd). NUSD offers PCR testing, rapid testing and is piloting pooled testing with our athletes. We test asymptomatic individuals, as well as individuals who have been exposed or are symptomatic. Testing required per the new quarantine guidance can be provided at the school site and we will work to accommodate parent schedules.

*Definitions:*

Updated 4/1/2022

*Asymptomatic* testing is used for surveillance and to determine whether schools have a higher or lower COVID-19 rate than the community, to guide health and safety decisions in the District and to inform SCPH about in-district COVID-19 rates. Staff and students can be tested every few weeks for this purpose.

Asymptomatic testing may also be used to screen staff and students for possible COVID-19 cases. The cadence for screening can be 1-2 times per week.

*Response* testing is used to identify positive individuals once a case has been identified in a given stable group. Response testing can be done with symptomatic and asymptomatic individuals with known or suspected exposure to COVID-19.

*Symptomatic* testing is used for individuals with symptoms of COVID-19, either at home or at school.

#### Testing in a Non-Outbreak Setting

In addition to the other steps required in our mitigation plan, staff/students will be offered free testing in the event of a positive case or exposure that does not meet the definition of an outbreak or major outbreak.

#### Testing with Multiple Infections and Outbreaks

In the event of an outbreak, NUSD will offer PCR testing to all employees and students at the site, with the exception of employees or students who have not been on site. The testing will be provided at no cost to the employee/student. All employees/students will be offered testing once the first week and again one week later. Testing will continue to be offered weekly until the site no longer meets the qualification of an outbreak site.

Staff/students may opt to use their own medical provider; however, free testing will be offered. Although it is strongly encouraged, staff are not required to get tested (per Cal/OSHA, an employer is required to offer the test at no cost and the employee may decline or refuse to take it).

#### Testing in a Major Outbreak

Natomas will provide twice a week COVID-19 testing, or more frequently if recommended by the local health department, to all staff and students who were present on the District site for the relevant 30-day period(s) or for those who continue to come to school or work at the site. COVID-19 testing will be provided at no cost.

#### Mandatory Weekly Staff Testing

Per the July 26, 2022 Health Order, MOU with CSEA and NTA, CDPH Guidance, and Cal/Osha

Updated 4/1/2022

requirements, weekly testing is required by non-vaccinated staff. Although there are recognized exemptions for vaccines, there are no recognized exemptions for testing. Per the MOU with

If an unvaccinated bargaining unit member fails to receive weekly testing, the following steps shall be taken:

1. After the first missed test, the employee will attend the next available testing opportunity as listed in the email notification of the missed test.
2. After the second missed test, the employee will be directed to attend the next available testing opportunity.
3. After the third missed test, the Supervisor shall request a meeting and inform the employee that they may have their labor representative present. During the meeting, the Supervisor shall remind them of the testing requirement and provide information on how to schedule the next available testing opportunity.

both NTA and CSEA, staff are required to test weekly. Please speak with your Union if you have questions.

## Vaccinations

### School Vaccines

4. If the employee fails to attend the meeting with the supervisor or to get tested following the meeting, they will be placed on paid leave for the day to decide on the course of action that is best for them as an individual, (i.e. get vaccinated, get tested and continue at work, or take an applicable leave).
5. If the employee fails to comply after that day of paid leave, they will be placed on unpaid leave.

NUSD offers staff and students COVID vaccines a minimum of once per month through our pop up clinics. Pop up vaccination clinics are held at 1931 Arena Blvd and appointments can be made at [Vaccine appointments](#). In addition, the community can receive a COVID vaccine or booster at [Urgent Care Now](#)

[Natomas](#) every Monday or Friday from 7 am - 7 pm.

## Section 7. Communication Plan

Natomas Unified communicates possible exposures and all positive cases in the following ways:

- Positive individuals are identified through symptomatic testing, routine testing, and parent/staff report. The individual will be informed of next steps, including test options (free), and self-quarantine or self-isolation requirements;
- We make every attempt to notify all individuals in the positive person's class, group or program who are considered exposed. These individuals will receive an email and a text message on the same day we receive notification of the exposure. Staff- please contact Human resources regarding COVID-19 related absences;
- The administrator for the school site/District site will send an email to all staff informing them of the possible exposure and/or positive COVID-19 case on campus. Parents will be informed if the case involves students/classroom;
- The Natomas Unified COVID-19 Dashboard will reflect all positive cases and is publicly posted on the front page of the NUSD website. We will do our best to update the Dashboard each week on Tuesday and Friday;
- The Sacramento County Department of Health will be notified of all major outbreaks. The District will follow the guidance from CHPH.

Updated 4/1/2022





the further spread within the workplace. This notification timeline is subject to change based on SCPH direction.

## Section 8. Exposures and Reporting

### Investigation of COVID-19 Cases

When a person is positive, all individuals in their class, group or program will be notified of an exposure. The school nurses are the primary contacts for SCPH. Each school site has identified healthcare staff who have been trained in testing and contact tracing.

When investigating a COVID-19 case, the healthcare staff will interview the positive person and determine:

1. When the individual was last in workplace/school
2. Date of onset of symptoms;
3. Date of testing and results;
4. Offer testing at no cost during and after school hours;
5. In writing, within 24 hours, notify all staff/families of the potential exposure on campus;
6. Post all positive cases on the Dashboard.

Once the interview is completed, the COVID-19 Team will ensure the following:

1. The Dashboard is updated;
2. Individuals who have been exposed will receive an email and a text notifying them of their exposure. Follow up directions are included in the letter;
3. Communication is sent to the appropriate individuals (eg: staff and families) informing them of a positive case;
4. Human Resources has provided information to the staff person (eg: use of sick leave (if necessary), working from home, etc);
5. Maintenance and Operations will identify and clean all locations that require cleaning;
6. The exposure and employee/student interactions will be discussed and any corrective measures will be taken;
7. Sacramento County Public Health will be notified if a major outbreak occurs.

# Supporting Letters

## Staff Letter

### Date

To: ---- (Certificated/Classified)

Subject Line: COVID

We were just alerted that an individual at ---- tested positive for COVID. The last day this person was on campus was ----. With an abundance of caution, our NUSD Team has worked to contact all individuals who have had significant contact with this person to inform them of their potential exposure. As part of our protocol, if any other information is gathered, we will inform you as well as all appropriate people.

---- offers onsite testing on --- and ---. In addition, we offer testing MWTHF mornings from 7- 9:15 am and Tuesday from 10- 4 pm at 1931 Arena Blvd.

As always, please reach out directly to me with any questions, comments, or concerns.

Sincerely,

## Exposure letter

### Notification of COVID-19 Exposure

Dear Parent(s)/Guardian(s):

Natomas Unified considers the health and well-being of our students and staff a priority. We have been alerted that (STUDENT NAME) may have been exposed to an individual diagnosed with COVID-19. We are following public health recommendations to ensure that the person with COVID-19 follows instructions for isolation and remains away from others until they can safely return to school. Your student was exposed on (DATE).

What does this mean for you and your student?

1. **Your student may remain in school unless they develop symptoms or test positive for COVID-19.** Being exposed to somebody with COVID-19 does not necessarily mean that your student will get COVID.
2. **Your student should get tested for COVID-19 within 3-5 days of receipt of this letter, or sooner if your student starts to show symptoms.** You may get tested at your doctor's office, a pharmacy, community clinic or with a home test. Natomas continues to offer testing at 1931 Arena Blvd daily from 7 am- 9 am (staff and students only); or Monday and Friday from 7 am - 7 pm for individuals who are symptomatic (Urgent Care Now Natomas). Please check with your school site if you are interested in school based testing office hours.
3. **If your student develops symptoms of COVID-19 or tests positive for COVID-19, please ensure they isolate at home immediately and notify the school site.**
4. **Exposed students who participate in testing may continue to take part in all aspects of K-12 schooling, including sports and extracurricular activities, unless they develop symptoms or test positive for COVID-19.**
5. **If your student was exposed in the home, and they are not vaccinated, please quarantine for five days. If they test negative after day 5, and are symptom free, they may return to school. If they are already vaccinated and are symptom free, they may immediately return to school (no quarantine); however, they will need to test within 3-5 days.**

We will continue to provide you with regular updates as needed. Please refer to the Digital Backpack and the COVID Information page of the Natomas Unified website for additional information, including appointment options for testing, vaccines and health care. We encourage you to contact your school's health office with any questions or concerns.

Thank you,

NUSD Health Team

Updated 4/1/2022

### Parents of Outbreak Class

XX/XX/X20XX

This letter is to inform you that today, January XX, there have been multiple positive COVID cases in your child's classroom over a 14 day period. As per the COVID Safety Plan, Natomas Unified is working hard to follow the state guidelines and to keep our students safe and in school. Natomas is taking the following actions:

- 1) The classroom has been cleaned daily as per our protocol; however, the classroom will be deep cleaned this evening.
- 2) For your convenience, rapid testing will be offered to your child's class today and on Monday, January XX in the Health Office. The link is provided here to register for testing. [Rapid Testing Registration Link](#)
- 3) COVID testing is required for your student to remain in school. If you choose not to have your student tested, they must quarantine for 10 days from the date of exposure.
- 4) All COVID policies have been reviewed to ensure that they are being followed.
- 5) Sacramento County Public Health has been notified and is aware of the cleaning and testing plan.

You can review the Natomas Unified COVID Safety Plan using the following link:

[NUSD COVID Safety Plan](#)

If your child, or anyone in your home, demonstrates any symptoms, including coughing, difficulty breathing, loss of taste or smell, flu like symptoms, nausea, vomiting or headaches, please stay home and let us know. Please feel free to contact me if you have any questions or concerns. Let's work together to keep our students, staff and families healthy.

Principal XXX  
XXX School

1

## Record Keeping and Reporting

Natomas follows all reporting guidelines set by Sacramento County Public Health. Potential exposures are documented in a Confidential Tracker, including identifying information, exposures, notification dates, last day on campus, date of symptoms, date of testing, date Human Resources was notified, County notification, return dates, follow up calls and actions taken. All confirmed positive and suspected cases are reported to SCPH.

As per NUSD practice of identifying any individual who is positive for COVID-19, the following actions occur when identifying and reporting cases:

Updated 4/1/2022

- County Public Health is notified for each positive case and each exposure using this form:

Sacramento County Public Health Contact Tracing Form

COVID-19 School Outbreak Tracker															
School Name:		Address:		Class/Activity Name:											
Contact Person:		Title:		Phone:		Email:		Date:							
IN CLASS/ACTIVITY: # of students:		# of staff:		# Students on Modified Quarantine:		# Students on Home Quarantine:		# of staff on Quarantine:							
SCHOOLWIDE: # of students:		# of staff:		# Students on Modified Quarantine:		# Students on Home Quarantine:		# of staff on Quarantine:							
Case Demographics					Case Information				Diagnostics						
Name, Address and Phone number					Date of Birth	Age	Gender (M/F)	Student (S) or Employee (E)	Last day of attendance	Participation in extracurriculars	If yes, what activity	Fully Vaccinated (Y/N)	Reason for test: S-Symptomatic, Q-Quarantine testing, SURVL - Surveillance	Specimen Collection Date (mm/dd)	Type of Test: PCR, AG - antigen, AB - antibody
2															
3															
4															
5															
6															
7															
8															
9															
10															
11															
12															
13															
14															
15															
16															
17															
18															
19															
20															

Sacramento County Public Health Outbreak Tracker

- NUSD maintains confidential records of all persons who are positive as well as all required supporting documentation obtained through contact tracing;
- Cal/OSHA will be notified in the event of any COVID-19 related serious illnesses, injury or death, as defined under CCR Title 8 section 330(h), of an employee occurring in our place of employment or in connection with any employment.

## Confidentiality Requirements

- Unredacted COVID-19 tracking information shall be provided to the Health Department
- All staff and student medical records are confidential and are not disclosed without express written consent to anybody outside of the district with the exception of Public Health
- Confidentiality does not apply to records that do not contain individually identified medical information
- Whether a person has been vaccinated is not protected information and must be divulged if asked during contact tracing. If a person has not been vaccinated, the reason WHY is protected information.

# Community Reporting Requirements

Natomas informs staff and families of potential exposure or positive cases as per the Communication Plan outlined in Section 7. In addition, the District has a [COVID-19 Website and Dashboard](#) that are used to keep the community informed. All active positive cases of COVID-19, for individuals who are currently coming on campus, as well as a running record of all cases and quarantines, are recorded on the Dashboard every Tuesday and Friday.

COVID DASHBOARD : District Summary	
LAST UPDATED 9/10/21	
Active Cases	Running Total Positive
69	178
Active Quarantine Cases	Running Total Quarantine
816	2,189
District summary of active cases and a running total from the first day of school (August 12, 2021). This table is updated every Tuesday and Friday.	
District Summary	

## Natomas Unified's COVID-19 Dashboard

Natomas Unified was one of the first Districts to launch a COVID Dashboard- from the beginning, we focused on the health and safety of our community as well as open and transparent communication. As we navigate this pandemic, we realize that we need to adjust how and what we communicate so our stakeholders have the information they need to make decisions for themselves and their families.

### What does the Dashboard represent?

The Dashboard represents all active and past positive cases of COVID-19 and the corresponding quarantines (both regular and modified). The following tables are included in the NUSD Dashboard:

- The **Summary Table** is the District total of active cases and quarantines as well as a running total of all positive cases and quarantines since August 12, 2021.
- The **Active Table** represents all current positive cases and corresponding quarantines by school site. An active or current case includes all individuals who are currently in the 10-day quarantine period (either positive individuals or because of an exposure).
- The **Year At A Glance Table** includes all positives and corresponding quarantines by site for the month. August includes all cases since August 12, 2021, or the first day of school.
- The **Historical Table** provides an historical reference for all positive cases since October 2020.

### Where does the data come from?

If the individual has tested positive through the District testing program, we will know as soon as the results are available. If the individual tests privately, we learn of the positive test result when it is reported to the site or District office.

### Active Cases

Current positive cases and quarantines that are still within the 10 day quarantine period.

Dashboard

### Year at a Glance

A monthly total by site of all positive cases and quarantines for the 2021-22 school year.

Dashboard

### History of Cases

## Section 9. Training

### Training Staff and Students

Natomas Unified School District has taken a very proactive position with preventing and responding to COVID-19 - including steps such as Personal Protective Equipment (PPE) for all staff, PCR and Rapid Testing, vaccinations, MERV and HEPA filtration systems, nightly disinfection, contact tracing, technology and hot spots for all students/staff in need, and a transparent communication system with staff, parents and the community. This plan is available on the [District website](#), school site websites, and in the students [Digital Backpack](#). The COVID-19 Dashboard and General Information tab is a one stop website location for the following:

- [COVID-19 Dashboard](#) (positive cases by site)
- [COVID-19 Testing appointments](#)

Updated 4/1/2022



- [COVID-19 Safety and School Site Plans](#)
- [COVID-19 Student Safety Videos and Resource Hub](#)
- All required staff training videos are located in [My NUSD Portal](#). Time is made available during the work day for each staff member to review the safety training videos and completion of required viewing is monitored for administrative staff.
  - [Hand washing](#)
  - [Use of Face Mask](#)
  - [Social Distancing](#)
  - [COVID-19 Workplace Safety](#)
  - [COVID-19 Workers Safety Message](#)
  - [COVID-19 Cleaning & Disinfecting](#)
  - [COVID-19 Symptoms](#)
  - [What if I had COVID-19 & How long is COVID-19 Contagious?](#)
  - [Tips for Managing COVID-19 at Home](#)
  - [Help to Slow the Spread of COVID-19](#)
  - [Understanding COVID-19: How to Stay Safe](#)
  - COVID-19 Quiz

## Staff Training

Department training is regularly scheduled to stay current regarding cleaning and disinfection procedures, updated guidance from the State and County, for health-related updates and for contact tracing. Mandatory attendance is monitored by the supervisor and attendance records are maintained.

- How to navigate campuses including flow of traffic and directional signs
- M&O How to Order PPE Using the NUSD Work Order System
- Regularly scheduled department training for Maintenance & Operations, Custodial and Nutrition Services on updated cleaning and disinfecting procedures, state guidelines, use of PPE, etc.
- Regularly scheduled nurses' meetings to discuss updated guidelines, testing, contact tracing, PPE, and communication procedures
- District Nurses attend the weekly Sacramento County Public Health COVID-19 meetings as well as the County Nurses Meetings. Attendance is necessary to ensure that the District stays current and that processes are updated in a timely manner
- Two staff members from each school site or district building, selected by the school site, have completed the Johns Hopkins training for contact tracing. In addition, our nurses hold update training, as needed
- [District Office and Site Safety videos](#)
- [Nutrition Services Department - Preparing for our Transitional Reopening 2020-21](#)
- [Transportation Services: How We are Preparing for our Transitional Reopening](#)

Updated 4/1/2022



# Community Training

All NUSD families are provided training videos on the COVID-19 website. The COVID-19 Plan is posted on the COVID-19 District website (This plan is available on the [District website](#), school site websites, and in the students [Digital Backpack](#)).

*District wide posters to reinforce videos and trainings*

- [Symptoms](#)
- Self-Screening Procedures
  - [When to Stay Home English CDC](#)
  - [When to Stay Home Spanish CDC](#)
  - [CDC Feeling Sick Work English](#)
  - [CDC Feeling Sick Spanish](#)
  - [CDC At Risk](#)
- [How to Wash Your Hands Guidelines](#)
  - [Handwashing English CDC](#)
  - [Handwashing Spanish CDC](#)
  - [CDC Handwashing What You Need to Know](#)
  - [CDC Hand Washing Page](#)
- [How to Safely Wear and Take off a Face Covering](#)
- Travel Advisory
  - [International Travel Alert](#)
  - [Global Travel Alert](#)
- [CDC Poster - What to do if a student becomes sick at school](#)
- [SCPH Symptom Decision Tree](#)

## Appendix A: Previous Guidance

The guidance referenced in this document includes:

1. [CDPH October 20, 2021, K-12th Guidance](#). July 12, 2021
2. [CDPH Fully Vaccinated People](#). February 15, 2021
3. [CDC Plan for Fully Vaccinated Individuals](#); March 8, 2021
4. [CDPH update March 21, 2021](#)
5. [Early Childhood/Preschool Guidance](#); March 19, 2021
6. [CDC 3' Guidance](#); 3/20/2021
7. [COVID-19 and Reopening In-person Instruction Framework & Public Health Guidance for K-12 School in California 2020-21 School Year](#). January 14, 2021
8. [California Department of Public Health Checklist](#). January 14, 2021
9. [CDPH Guidance Related to Cohorts](#). September 4, 2020
10. [COVID-19 Update Guidance: Childcare Programs and Providers](#). July 2020
11. [Cal/OSHA Emergency Standards](#). December 1, 2020
12. [Outdoor and Indoor Youth and Adult Recreational Sports](#). January 25, 2021
13. [Face Covering Q and A](#), January 31, 2022
14. [Get the Most Out of Masking](#), January 14, 2022
15. [Face Covering Fact Sheet, CDPH](#). December 15, 2021
16. [CDPH July 12 K-12th Guidance](#). July 12, 2021
17. [CDPH Fully Vaccinated People](#). February 15, 2021
18. [CDPH Supplemental Guidance- 8/29/21](#)
19. [Mask Guidance- CDPH](#)- August 24, 2021
20. [CDPH Guidance August 2, 2021](#)
21. [Sacramento County Mask Mandate](#), July 29, 2021
22. [Weekly Testing Health Order](#), July 26, 2021
23. [Youth Athletics Guidance](#), November 16, 2021
24. [Vaccine Mandate, October 1, 2021](#)
25. [California Interscholastic Federation, September 1, 2021](#)
26. [CDPH Guidance September 1, 2021](#)

## Appendix B: Consultation

### Labor Organization Consultation

#### Natomas Teachers Association (NTA)

March 18, 2020:	<b>MOU: NTA regarding COVID-19 Response</b>
March 23, 2020:	<b>MOU: NTA regarding COVID-19 Response</b> (Distance Learning for Students With An IEP)
May 14, 2020:	<b>NTA COVID-19 Response Related to Virtual Specialized Class Committees</b>
May 17, 2020:	<b>NTA MOU COVID-19 Response Related to Early Stater 2020-2021</b>
May 18, 2020:	<b>NTA MOU COVID-19 Response Related to K-12 Independent Studies</b>
May 19, 2020:	<b>NTA MOU re Hybrid Learning and Distance Learning Educational Options</b>
July 23, 2020:	<b>MOU re Distance Learning in 2020-21</b>
September 1, 2020:	Consultation Meeting re: Learning Continuity and Attendance Plan
September 30, 2020:	<b>NUSD-NTA In-Person Supplemental Cohorts</b>
September 30, 2020:	<b>NUSD-NTA 1:1 In-Person Assessments</b>
October 31, 2020:	<b>NUSD-NTA 2021-22 School Year Negotiations</b>
January 17, 2021	NUSD-NTA Temporary Grade Policy (Awaiting Board Ratification 2/10/21)
February 9, 2021:	Consultation Meeting
February 11, 2021:	Consultation Meeting
February 14, 2021:	Addendum No. 1 to 2021-22 School Year Negotiations MOU
April 7, 2021:	<a href="#"><u>Addendum No. 2 and Settlement Agreement</u></a>
May 18, 2021:	<a href="#"><u>2021 Summer School</u></a>
May 28, 2021:	<a href="#"><u>Amendment to April 7, 2021 Addendum #2 and Settlement Agreement</u></a>
May 28, 2021:	<a href="#"><u>NUSD's K-8 Larry G. Meeks Academy</u></a>
June 14, 2021 :	<a href="#"><u>Amendment to the May 17, 2021 Memorandum of Understanding Between the District and NTA Regarding 2021 Summer School</u></a>
July 23, 2021:	<a href="#"><u>Addendum No. 1 to May 28, 2021 Memorandum of Understanding for NUSD's K-8 Larry G. Meeks Academy Between the District and NTA</u></a>

#### California Schools Employees Association (CSEA)

March 10, 2020:	<b>NUSD-CSEA Potential Emergency School Closure Related to Coronavirus (COVID-19)</b>
March 17, 2020:	<b>MOU: CSEA Regarding Essential Food Service Operations Due to COVID-19</b>

Updated 4/1/2022

March 19, 2020:	<b>MOU: CSEA Regarding COVID-19 Response</b>
April 6, 2020:	<b>Continuing Essential Food Service Operations Extending the Date Related to Pending Reclassification Requests During Closure Due to COVID-19</b>
May 15, 2020:	<b>CSEA MOU COVID-19 Response Related to Early Start 2020-21 Program</b>
July 16, 2020:	<b>NUSD-CSEA Safety and Leaves of Absence (MOU)</b>
August 6, 2020:	<b>NUSD-CSEA Coronavirus Response – Distance Learning</b>
August 28, 2020:	Consultation Meeting re: Learning Continuity and Attendance Plan
December 14, 2020:	<b>NUSD-CSEA Returning for Onsite Instruction During the COVID-19 Pandemic in 2020-21 and 2021-22</b> (Awaiting Board Ratification 2/10/21)
February 5, 2021:	Consultation Meeting
February 11, 2021:	Consultation Meeting
May 17, 2021:	<a href="#"><u>Additional Compensation for 2020-2021 School Year</u></a>
May 19, 2021:	<a href="#"><u>2021 Summer School and Summer Feeding</u></a>

#### **Parent and Community Organizations**

Organization: <b>Superintendent’s Parent Advisory Council</b>	August 19, 2020 January 27, 2021 February 17, 2021
Organization: <b>District English Learner Advisory Committee (DELAC)</b>	August 24, 2020 September 24, 2020 November 19, 2020 February 18, 2021
Organization: <b>Special Education Community Advisory Committee</b> <b>Alta Regional</b> <b>Warmline Family Resource Center</b>	July 9, 2020 July 23, 2020 July 29, 2020 August 20, 2020 September 3, 2020 October 15, 2020 December 3, 2020 January 14, 2021 February 18, 2021
<b>The 4th “R” (childcare):</b> 13 scheduled meetings	March-February 2021 February 11, 2021
<b>The Sacramento Chinese Community Center</b> (Day Camp): Weekly phone conferences	March-February 2021 February 11, 2021

Updated 4/1/2022

<b>Improve Your Tomorrow</b>	February 11, 2021
<b>Upward Bound</b>	February 11, 2021
<b>United College Action Network (UCAN)</b>	February 11, 2021
<b>Educational Talent Search (ETS)</b>	February 11, 2021
<b>Early Academic Outreach Program (EAOP)</b>	February 11, 2021
 <b>Family Input and Communication</b>	
Family Education Options	June 2020 October 2020 January 2021
 Students Needing Additional Support Survey	 January 2021
 Early Check-In Survey	 September 2020
 NUSD Learning Disruption Family Feedback Survey	 January 2021
 Survey for Current TK-4th and 5th Grade Students at K-8 Sites	 May 2020
 Distance Learning Survey	 March- May 2020
 Expanded Family Options Survey	 July 2020
 Foster/Homeless Youth	 August 10, 2020 August 14, 2020 August 24, 2020 April-August 2020 May 2020
Phone bank - 2900 phone calls	
Housing Questionnaire- 1,117 responded	
 Technology Survey	 March 2020 July 2020
 Parent Choice Survey	 July 5, 2020
 English Learner Survey	 September 2, 2020
 Special Education Surveys	 April 24, 2020 April 29, 2020 June 2020 August 26 2020 September 15, 2020 November 5, 2020

Updated 4/1/2022

	December 18, 2020
Staff survey on Distance Learning	July 30, 2020
Mental Health	April 8, 2020 May 18, 2020 August 10, 2020
Remainder of the 2020-21 School Year Decision Form	February 2, 2021
COVID Vaccination Survey	February 2, 2021 February 4, 2021

## Appendix C: Historical NUSD Safety Addendums and Certifications

*\*No longer in effect, based on the July 12, 2021 Guidance*

### **American Lakes School**

- [ALS Covid Safety Procedures Guidelines](#)
- [ALS Safety Procedures YouTube Video](#)
- [ALS Checklist Certification & Classroom Layout](#)

### **Bannon Creek School**

- [BCS Covid Safety Procedures Guidelines](#)
- [BCS Safety Procedures YouTube Video](#)
- [BCS Checklist Certification & Classroom Layout](#)

### **Discovery High School**

- [DHS Covid Safety Procedures Guidelines](#)
- [DHS Covid Safety Procedures Guidelines - Spanish](#)
- [DHS Safety Procedures YouTube Video](#)
- [DHS Checklist Certification & Classroom Layout](#)

### **H. Allen Hight**

- [HAH Covid Safety Procedures Guidelines](#)
- [HAH Safety Procedures YouTube Video](#)
- [HAH Checklist Certification & Classroom Layout](#)

### **Heron School**

- [Heron Covid Safety Procedures Guidelines](#)
- [Heron Safety Procedures YouTube Video](#)
- [Heron Checklist Certification & Classroom Layout](#)

### **Leroy Greene Academy**

- [LGA Covid Safety Procedures Guidelines](#)

Updated 4/1/2022

- [LGA Covid Safety Procedures Guidelines - Spanish](#)
- [LGA Safety Procedures YouTube Video](#)
- [LGA Checklist Certification & Classroom Layout](#)

#### **Inderkum High School**

- [IHS Covid Safety Procedures Guidelines](#)
- [IHS Covid Safety Procedures Guidelines - Spanish](#)
- [IHS Safety Procedures YouTube Video](#)
- [IHS Checklist Certification & Classroom Layout](#)

#### **Jefferson School**

- [JFS Covid Safety Procedures Guidelines](#)
- [JFS Safety Procedures YouTube Video](#)
- [JFS Checklist Certification & Classroom Layout](#)

#### **Natomas High School**

- [NHS Covid Safety Procedures Guidelines](#)
- [NHS Covid Safety Procedures Guidelines - Spanish](#)
- [NHS Safety Procedures YouTube Video](#)
- [NHS Checklist Certification & Classroom Layout](#)

#### **Natomas Middle School**

- [NMS Covid Safety Procedures Guidelines](#)
- [NMS Covid Safety Procedures Guidelines - Spanish](#)
- [NMS Safety Procedures YouTube Video](#)
- [NMS Checklist Certification & Classroom Layout](#)

#### **Natomas Park Elementary**

- [NPE Covid Safety Procedures Guidelines](#)
- [NPE Safety Procedures YouTube Video](#)
- [NPE Checklist Certification & Classroom Layout](#)

#### **Paso Verde School**

- [PVS Covid Safety Procedures Guidelines](#)
- [PVS Safety Procedures YouTube Video](#)
- [PVS Checklist Certification & Classroom Layout](#)

#### **Two Rivers Elementary**

- [TRE Covid Safety Procedures Guidelines](#)
- [TRE Safety Procedures YouTube Video](#)
- [TRE Checklist Certification & Classroom Layout](#)

#### **Witter Ranch Elementary**

- [WRE Covid Safety Procedures Guidelines](#)
- [WRE Safety Procedures YouTube Video](#)
- [WRE Checklist Certification & Classroom Layout](#)

## Appendix D: Definitions

### Definitions

- **Cal/OSHA employee or District staff:** There is no difference between an employee and a District staff. Cal/OSHA requirements apply to school district employees.
- **Cohort:** a group of no more than 16 people, including students and staff, who meet as a stable group and do not intermingle or comix with any other group or individuals. Cohorts in NUSD include day care, day camp, special education cohorts and sports conditioning.
- **COVID-19:** “COVID-19 is the disease caused by the new coronavirus that emerged in December 2019. COVID-19 symptoms include cough, fever or chills, shortness of breath or difficulty breathing, muscle or body aches, sore throat, new loss of taste or smell, diarrhea, headache, new fatigue, nausea or vomiting and congestion or runny nose. COVID-19 can be severe, and some cases have caused death. The new coronavirus can be spread from person to person. It is diagnosed with a laboratory test. Prevention involves frequent hand-washing, coughing into the bend of your elbow, staying home when you are sick and wearing a cloth face covering if you can't practice physical distancing.”  
(<https://www.hopkinsmedicine.org/health/conditions-and-diseases/coronavirus>).
- **Endemic:** Most experts predict that COVID-19 will become an *endemic* disease after its *pandemic* phase, once enough people have developed immunity to COVID-19 (through vaccination or infection). In other words, COVID-19 is expected to become a recurring disease like the flu. When this will happen is hard to predict—and it will most likely vary from place to place.
- **Exposed Workplace:** An exposed workplace is a work location or area used by a person who has tested positive for COVID-19 and has accessed specific work areas during a high-risk period.
- **High-Risk Exposure Period:** Two days before the first symptoms develop until 10 days after symptoms first appear, and 24 hours have passed with no fever, without medication, and symptoms have improved. If the positive person is asymptomatic, the high-risk exposure period is from two days before until 10 days after the date the first positive test was taken.
- **Isolation.** Separating people who are ill from others who are not ill to keep the disease from spreading.
- **Major Outbreak:** Twenty or more positive cases in the same workplace (school or District building) within a 30 day period.
- **Non-Outbreak:** A positive case(s) that does not meet the threshold for an outbreak.
- **Outbreak:** Three or more positive cases in the same workplace (school or District building) within a 14-day period.
- **Pandemic:** an *epidemic* that has spread over a large area, that is, it's “prevalent throughout an entire country, continent, or the whole world.” More specifically a *pandemic* as “a worldwide spread of a new disease.” In March 2020, the WHO officially



declared the COVID-19 outbreak a *pandemic* due to the global spread and severity of the disease.

- **Physical Distancing:** Social distancing, also called “physical distancing,” means keeping a safe space between yourself and other people who are not from your household. To practice social or physical distancing, stay at least 6 feet (about 2 arm lengths) from other people who are not from your household in both indoor and outdoor spaces.
- **PPE:** Personal protective equipment, is equipment worn to minimize exposure to hazards that cause serious workplace injuries and illnesses. Personal protective equipment (PPE) refers to protective clothing, helmets, gloves, face shields, goggles, facemasks and/or respirators or other equipment designed to protect the wearer from injury or the spread of infection or illness.
- **Provide vs Offer Testing:** Per Cal/OSHA FAQ there is no difference between “offer testing” and “provide testing.” The meaning of ‘provide’ and ‘offer’ is the same. The District is required to offer testing.
- **Response testing:** Testing that is provided in response to a non-outbreak, outbreak or major outbreak situation.
- **Self-quarantine: Quarantine.** Separating people and limiting movement of people who have or may have been exposed to the disease to see if they become ill.
- **Significant contact (close contact):** Less than 6 feet, for 15 or more minutes, over a 24 hour period to someone who is positive. It does not matter if the individuals are wearing a mask.
- **Stable Group:** a group of people, students and staff, who are in a small, stable group with minimal mixing with other groups or individuals.
- **Surveillance testing, or screening:** PCR or rapid testing used for ongoing monitoring of COVID-19 in the community.